

STRENGTHINTM 100 SYSTEM

FOR THIN WALL STAINLESS STEEL PIPE



- No need for a highly qualified welder or fire watch
- No need for pickling or passivating the joint
- No weakening of the stainless steel material
- Total installed cost savings
- Easier material handling
- Faster installation

THE WORLD LEADER IN PIPE JOINING SOLUTIONS



Scan for
INSTALLATION
VIDEO



ELIMINATE THE CHALLENGES OF WELDING STAINLESS STEEL PIPE



FEATURES

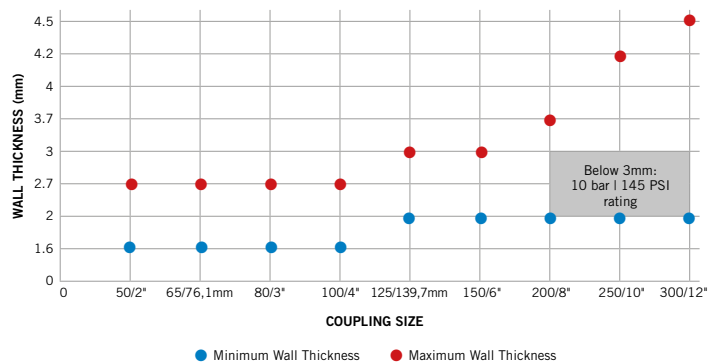
- Installation-Ready™ technology
- Available from DN50 – DN300 | 2" - 12"
- Coupling available galvanized or thermoplastic coated
- No torque requirements
- Gasket materials
 - Grade "EHP" EPDM
 - Grade "EF" EPDM
 - Grade "T" Nitrile

APPLICATIONS

- Cooling, chilled and heating water
- Air with oil vapors
- Potable water
- And other stainless steel applications

FOR THIN WALL STAINLESS STEEL PIPE

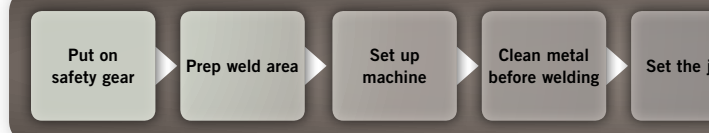
Style E497 Rigid Coupling is rated up to 16 bar | 232 PSI for use on various wall thicknesses.



Grooved Installation Process



Welded Installation Process



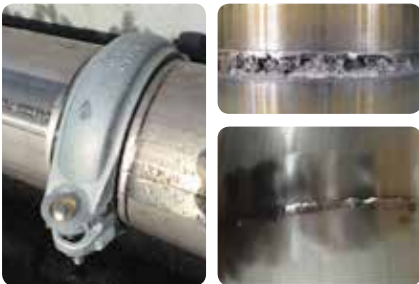
THE VICTAULIC STRENGTHIN™ 100 SYSTEM IS THE INDUSTRY'S FIRST GROOVED MECHANICAL PIPING SYSTEM SPECIFICALLY DESIGNED TO PERFORM UP TO 16 BAR ON THIN WALL 304/316 STAINLESS STEEL PIPE.

REDUCE LABOR RISK AND ENHANCE SAFETY

- Fewer steps to install
- Consistently faster pipe joints
- Optimize crew size
- No flames or noxious fumes

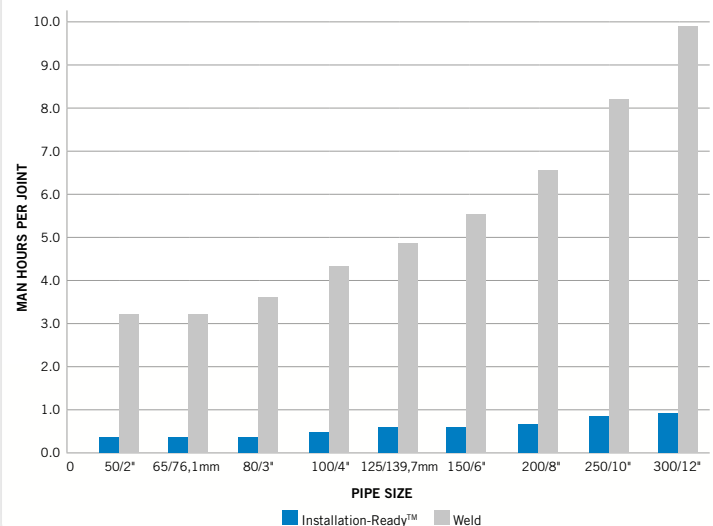
NO CHEMICAL PIPE TREATMENT REQUIRED

- Clean and uniform joint quality
- No need for pickling or passivating
- No weakening of the pipe
- No risk of overheating the pipe

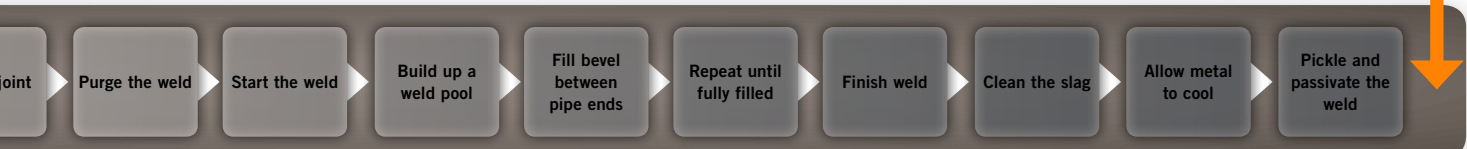


INCREASE INSTALLATION SPEED

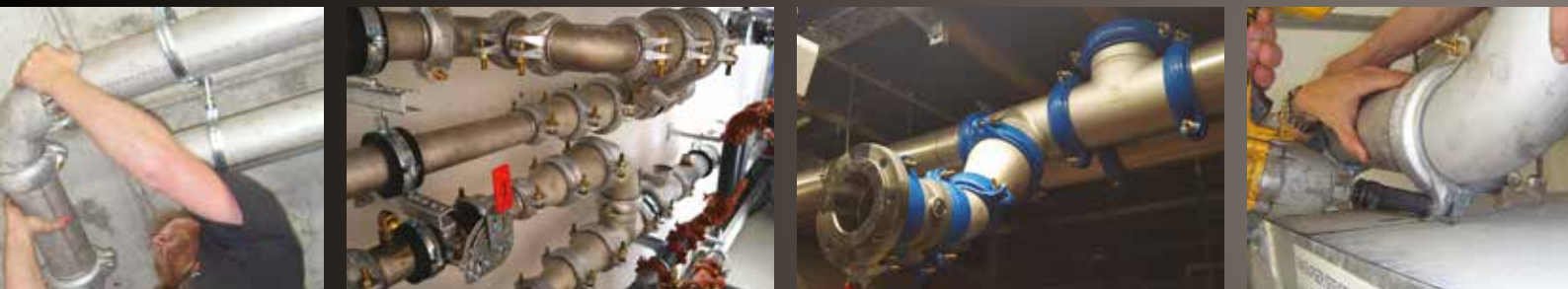
- Installation-Ready™ technology
- No disassembly, no loose parts
- Visual confirmation of a proper installation
- Install in every weather condition
- Less installation steps



WELDING STAINLESS REQUIRES OVER **88%** MORE MAN-HOURS ON AVERAGE



FASTER AND CLEANER JOINTS RESULT IN FASTER COMMISSIONING AND LOWER TOTAL INSTALLED COST

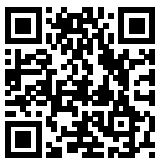


REDUCE TOTAL INSTALLED COST

- Optimize crew size
- No cost for fire permit
- No highly qualified welder required
- Increase on-site efficiency

NEW UNIQUE GROOVE PROFILE

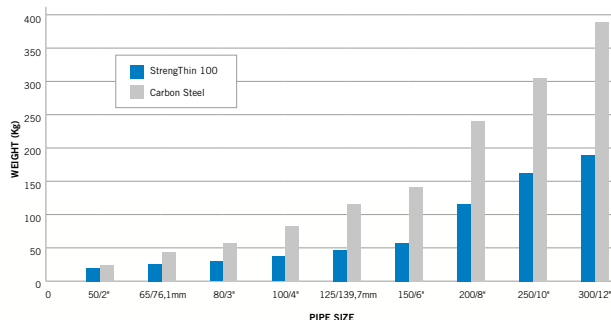
- No pipe flare possible
- Increased coupling engagement
- Tool rental package includes:
 - Tool and roll sets
 - Pipe cutter
 - Pipe stand
 - Go/No-Go pipe cable



Scan for
TOOL SET UP &
OPERATION VIDEO

WHY THIN WALL STAINLESS STEEL?

- Increase the life of the system
- Eliminate the cost of pipe coating
- Save on costs and time for flushing the system
- Ease of material handling
- Reduce system weight



For more information about the *StengThin™* 100 system, visit www.StengThin100.com

victaulic.com



PB-E497 8491 REV F 07/2017

Victaulic and all other Victaulic marks are the trademarks or registered trademarks of Victaulic Company, and/or its affiliated entities, in the U.S. and/or other countries. All other trademarks listed herein are the property of their respective holders, in the U.S. and/or other countries. The terms "Patented" or "Patent Pending" refer to design or utility patents or patent applications for articles and/or methods of use in the United States and/or other countries. © 2017 VICTAULIC COMPANY. ALL RIGHTS RESERVED.

